



Lennox Gardens

Knightsbridge SW1X





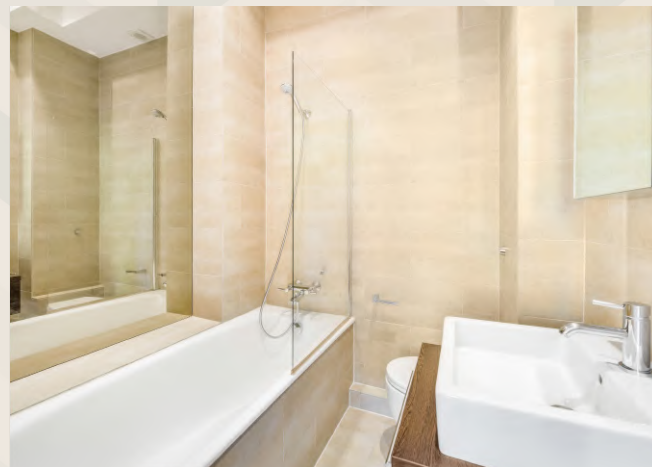
An elegant and rare to the market 3 bedroom first and second floor maisonette (with lift), extending to 1,400 Sq ft (130 Sq. m)

Situated on a marguerite Knightsbridge garden square, with access to the beautiful gardens (by separate negotiation) perfectly positioned equidistant from both King's Road and Harrods (0.3 miles) and a short stroll from Sloane Square and Knightsbridge underground stations as well as an array of world class shopping and dining options. EPC C.

Some of the myriad benefits on offer include air conditioning in the reception room, beautiful parquet wood flooring as well as high ceilings and fabulous natural light. The accommodation comprises: entrance hall, voluminous first floor reception room with balcony leading off, separate fully fitted kitchen, master bedroom with en-suite bathroom and built in wardrobes, two further bedrooms and shower room.

All potential tenants should be advised that administration fees may be applicable when renting a property. Please contact us for more details of these charges. Maskells are members of Propertymark the leading membership body for property agents. We are part of the Propertymark Client Money Protection scheme and a member of The Property Ombudsman Scheme (approved by the Office of Fair Trading) and subscribe to its Codes of Practice for Letting Agents.







APPROX. GROSS INTERNAL FLOOR AREA

1,400 Sq Ft / 130 Sq M

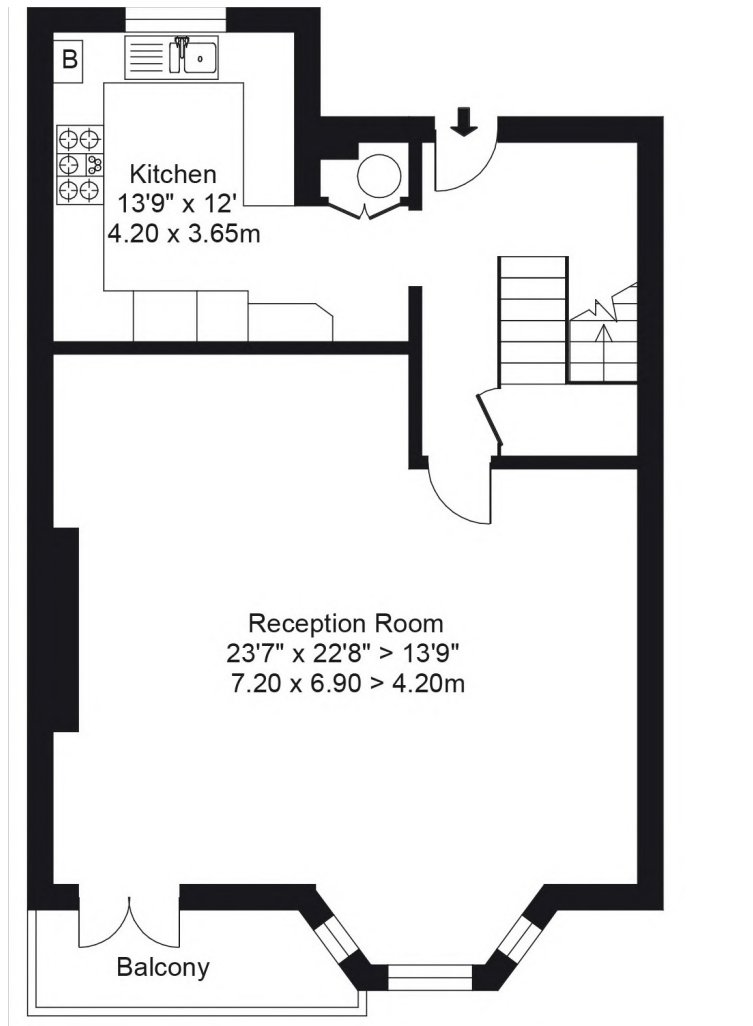
Asking Price £2,115 Per Week (£9,165 PCM)

Unfurnished

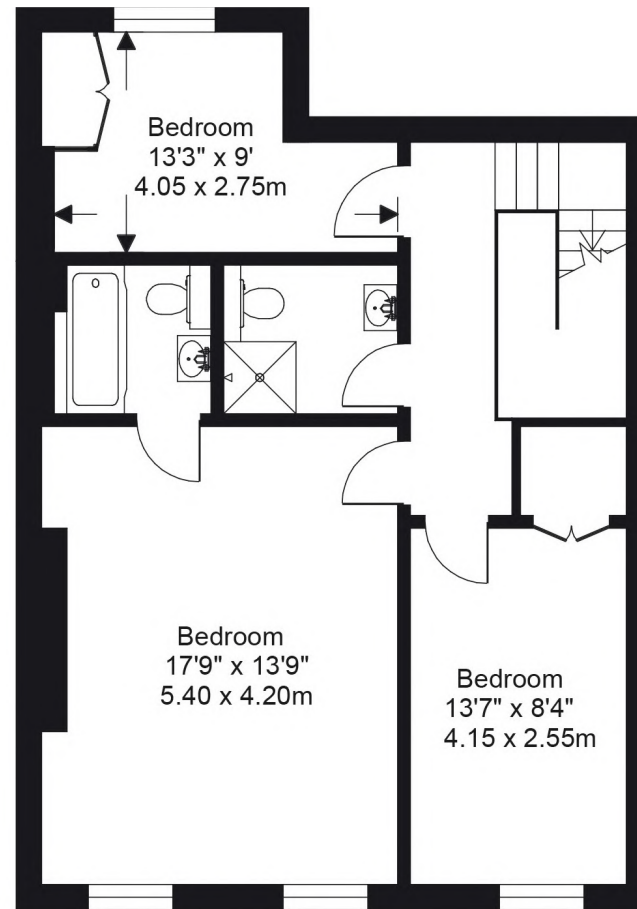
EPC:C

Local Authority: Royal Borough of Kensington and Chelsea

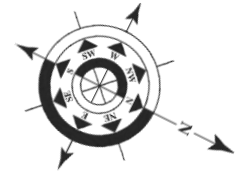
Council Tax Band: H



Second Floor 690 Sq Ft



First Floor 710 Sq Ft



Maskells

71 Walton Street

London

SW3 2HT

0207 887 2532

lettings@maskells.com